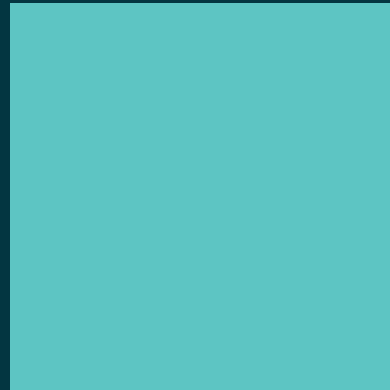




# STATEMENT OF AMBITION



CRICHTON  
CAMPUS  
LEADERSHIP  
GROUP









“Over the last two decades, the Crichton Campus has played a key role in bringing further and higher education closer to people living in the South of Scotland, responding to the needs of learners and employers, and progressing its ambition as a world centre for innovation and knowledge exchange.

Joint working and collaboration between all partners on Campus will be crucial to meeting the strategic priorities of this latest Statement of Ambition, and the Scottish Government welcomes the renewed commitment to supporting learner-focussed educational pathways, widening access, increasing research capacity and interdisciplinary collaboration, and attracting talent to the South of Scotland.

It is important in the years ahead that these priorities and the work of Crichton Campus partners continue to be progressed in alignment with our Purpose and Principles for the post-school education and skills system.”

**Graeme Dey, MSP**

Scotland’s Minister for Higher and Further Education

# Chair Foreword

## Dame Barbara Kelly

---



**This publication seeks to inform you of all the exciting opportunities offered by the institutions committed to developing the Crichton Estate and celebrates the setting up of the Crichton Campus Leadership Group (CCLG) ten years ago.**

The CCLG was launched in 2013 by the Scottish Govt. Cabinet Secretary for Education, Mr Michael Russell MSP. We were most fortunate to have his support and that of John Swinney MSP, who followed him as Cabinet Secretary for Education. Their commitment and encouragement have been crucial in our ability to deliver our objectives. The CCLG was created to facilitate a shared understanding of the skills, education and training needs of Dumfries and Galloway through effective engagement with all the key stakeholders by collaborating and having efficient communication and planning activity in a coherent manner, avoiding duplication of activity. We are very proud of the fact that the Crichton is unique in the UK in being a multi university and college campus and business park. The wider Crichton Quarter offers innovative and relevant possibilities for cooperation in training and job experience within the Crichton Business Park, NHS Dumfries & Galloway and the local authority.

I also wish to salute the Scottish Funding Council for their support from day one and I thank South of Scotland Enterprise for their willingness to help us employ a CCLG Development Director, jointly funded by the two organisations.

I passionately believe that the Crichton can bring significant benefits and wellbeing to the community. There is no doubt that the issues being faced ten years on, have been truly challenging as we tackle the impact of BREXIT, the COVID epidemic and the Ukraine War. The recent Oxford Economics Vulnerability Index considers how able an area is, to withstand and respond to the economic shock resulting from COVID. Dumfries & Galloway has scored 133.0 making it the 5th most vulnerable local authority in the UK. In tackling this, The Crichton is at the forefront of innovation in the scoping and delivery of education, skills and training. The magnificent environment and diverse study options are attracting local, national and international students, researchers and academics.

Despite the challenges, we have made real progress in recent times and I congratulate the institutions which have attracted significant development



funding. It is important to recognise that The Crichton is part of an economic success story, a dynamic place of learning, with the potential to deliver an even greater breadth of provision, offering equity and access, across the region and beyond. The inheritance by Dumfries of such an historical, innovative initiative centre for mental health care is truly remarkable both locally and internationally.

Within this Statement of Ambition, each partner outlines what they have to offer and gives information about who to contact for further help and information. As a collective partnership, our four key priority areas are; Equitable Learning Opportunities, Student Experience, Innovation & Collaboration, Research & Knowledge Exchange.

I hope that you find this report useful and that you seize the opportunities available to you in a most exciting and inspiring place of learning. There can be no doubt that the regeneration of the Crichton is the most important development in Dumfries and Galloway in recent times bringing with it the promise of significant economic, social and cultural benefit for the wider community of south west Scotland.



# CONTENTS

AN INTRODUCTION	7
THE CRICHTON: AN INSPIRING PLACE TO LIVE, WORK AND STUDY WELL	8
CRICHTON CAMPUS MAP	10
WORKING COLLABORATIVELY	12
STRATEGIC PRIORITIES	14
MEET THE PARTNERS	19
OTHER ON-SITE HIGHLIGHTS	26
FIND OUT MORE	27





# An Introduction

---



**As the Crichton Campus Leadership Group (CCLG), we are a partnership united by a shared objective to enhance the academic campus and student experience within the unique and magnificent environment of The Crichton Estate, building on its extraordinary history as an internationally recognised centre of excellence.**

As Scotland's most multi-institution academic campus, The Crichton is home to five tertiary educational institutions which operate alongside over 100 other private, public and Third Sector organisations – presenting unrivalled opportunities for wider collaboration and knowledge exchange.

Established in 2013 to facilitate a shared understanding of the education, skills and training needs of Dumfries and Galloway, the Partnership's ultimate ambition is to have a transformational impact on the prospects of Dumfries and Galloway, its economy, its people and its communities – contributing to the creation of a Greener, Fairer and Flourishing South of Scotland. An integral part of the region's skills planning, we aim to support Scottish Government's Net Zero NSET ambitions, as well as its national lifelong education and skills planning priorities.

As a collective, we ensure a louder and stronger voice to champion the needs of our region, consequently helping to secure the provision of efficient, integrated, flexible and learner-focused routes from school level through vocational, Higher National, undergraduate and postgraduate study and research degrees, that are responsive to our rural needs.



“Through our collaboration with the CCLG and wider businesses at The Crichton, diverse perspectives come together, leading to richer ideas and solutions that may not have been possible individually...enabling efficient coordination and the harnessing of complementary strengths. The Crichton, given its diverse academic partners co-located with over 130 businesses, makes it a national exemplar.”

*Gwilym Gibbons,  
Chief Executive, Crichton Trust*



“We are committed to realising opportunities to enhance the volume and scope of provision across the institutions based on the Crichton Campus to improve the learner journey and increase positive student outcomes.”

*Joanna Campbell, DGC  
Principal and Chief Executive*




## The Crichton: An Inspiring Place to Live, Work and Study Well

---

The Crichton Campus, located on the outskirts of Dumfries, is a magnificent 85-acre parkland estate, steeped in history and now very much at the forefront of supporting the transition to our emerging future. The site is of national importance as a model for both the sensitive re-purposing of a significant historic site as well as for the delivery of a responsive education, training and enterprise offer and knowledge exchange.

The Crichton provides a vibrant business and academic community, being home to over 100 private, public and Third Sector organisations including five academic partners, through which a unique and growing range of flexible full and part-time study opportunities in both further and higher education – all in one place – are available.





Elizabeth Crichton  
founder of The Crichton



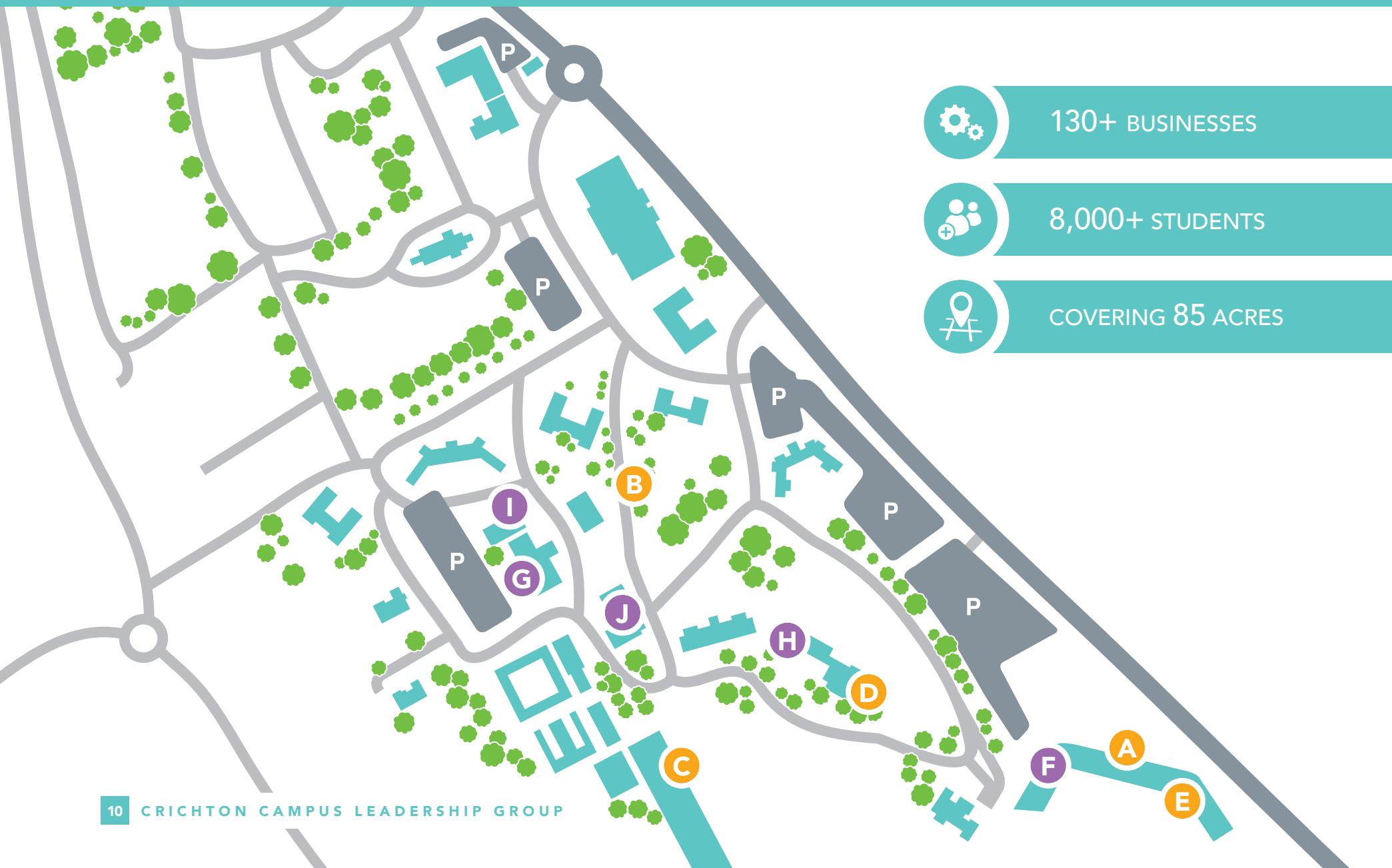
The superb environment, diverse study options and the ever-growing reputation of the site as a unique world-renowned home and destination for innovation combine to attract local, national and international students, researchers and academics to the South of Scotland.

**Founded by Elizabeth Crichton** in the early 1800s, the site was originally intended to be a university for Dumfries for the education of 'poor scholars'. Instead, the site opened its doors in 1839 as a psychiatric hospital. Ahead of its time, the Crichton's green and spacious environment and impressive architecture allowed for patients to receive the very best treatment. The Crichton quickly gained what would prove to be long-standing international recognition and acclaim as a centre of excellence in mental health research and care. The Crichton is the home to many significant firsts including that of the first nurse training programme in the UK and has a growing reputation as a test bed for solutions to the big environmental, economic and societal challenges we now face.

Passing from the hands of the NHS to Dumfries & Galloway Council in 1995, The Crichton is now managed by The Crichton Trust, a registered charity and social enterprise with a desire and track record to "connect people, place and the past to shape the future". A key part of the Trust's overall strategic responsibility is to "develop The Crichton with a clear identity as a place of educational, commercial, recreational, cultural and artistic excellence" recognising that it is "so many things to so many people". The Crichton Trust's commitment to a Net Zero campus – for example developing a district heating system and retrofitting the historic buildings – is reflected throughout the partners of the CCLG and their activity.

As a place for people to cohabit and share ideas – inspired by The Crichton's extraordinary history, places and spaces – the site offers endless opportunities and possibilities to develop an entrepreneurial campus, and drive a regionally responsive entrepreneurial ecosystem.

# Crichton Campus Map



-  130+ BUSINESSES
-  8,000+ STUDENTS
-  COVERING 85 ACRES

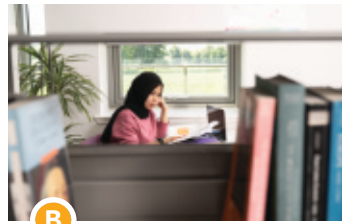




**ACADEMIC PARTNERS** *(Find out more on pages 19-25)*



**A**  
**DUMFRIES & GALLOWAY COLLEGE**  
Dumfries Campus



**B**  
**OPEN UNIVERSITY**  
Working in partnership across the campus



**C**  
**SRUC CRICHTON ROYAL FARM**  
Dairy Research & Innovation Centre



**D**  
**UNIVERSITY OF GLASGOW**  
School of Social & Environmental Sustainability



**E**  
**UNIVERSITY OF WEST OF SCOTLAND**  
Dumfries Campus

**OTHER ON-SITE HIGHLIGHTS** *(Find out more on page 26)*



**F**  
**AIMS**  
Advancing Innovative Manufacturing in the South of Scotland



**G**  
**CRICHTON CENTRAL CO-WORKING SPACE**



**H**  
**NATIONAL CENTRE FOR RESILIENCE**



**I**  
**SCOTLAND 5G CENTRE INNOVATION HUB**



**J**  
**PROPOSED CRICHTON CENTRE FOR MEMORY AND WELLBEING**

# Working Collaboratively

---

Set up in 2013 as the Crichton Campus Leadership Group (CCLG), we aim to facilitate a shared understanding of the education, skills and training needs of our region, Dumfries and Galloway and, given the significance of the unique multi-institution Crichton Campus, the wider South of Scotland too.

In providing a forum through which we can coordinate engagement with key stakeholders, including academic partners, we have recognised that our partnership plays a vital role in identifying potential activity and supporting efforts to maximise the collective impact of the Crichton Campus for the wider economic and social benefit of the region, nationally and internationally.

Our collective commitment underpins the unique ability of the multi-institution Crichton Campus to deliver an extensive and diverse portfolio of tertiary education opportunities in a region where, historically, they have been difficult to access.



Our vision is to have a transformational impact on the prospects of the region, its economy, its people and its communities.

As partners, each of us are committed to applying our individual strengths and expertise, as well as jointly collaborating, to:

- widen access and equality of opportunity – to reflect the diverse population of the region
- create an inclusive, world class research and teaching environment – harnessing local specialist knowledge to deliver this
- increase employer and community engagement – ensuring our collective offer is responsive to the needs of the region
- deliver an efficient learner journey focused toward and into sustained employment – making the most of our connections with each other and the region



“...we cannot deliver change on our own. Partnership and collaboration have always been at the core of SDS’s approach. The need for this will only strengthen going forwards. Our corporate goals chime with those of the Crichton Campus Leadership Group and SDS view the CCLG as an example of the type of collaboration that is required to serve regional and national ambitions.”

*Chris Brodie, Director of Regional Skills Planning & Sector Development, SDS*

By harnessing our individual strengths; shared knowledge of the economic, cultural and environmental needs of the South of Scotland; experience of engaging with business and industry in a rural context; and, our track record of successful collaboration, we have the ability as a collective to simultaneously deliver our ambitions in a way which makes an enhanced contribution to the economic and social development of the South of Scotland and national ambitions too.

More specifically, the desired outcomes of our efforts include:

- Increased opportunities for access to further and higher education and lifelong learning for all within our region
- A high-quality education and experience that retains students in the region and attracts talent from elsewhere
- Increased opportunities for engagement in work-based learning and apprenticeships
- Increased skill levels in our workforce – closing the gap between our region and others – contributing to improved business productivity across the South of Scotland
- Working alongside other key partners to develop entrepreneurs
- Developing research, innovation and knowledge exchange between academic institutions and businesses, to raise the profile of the Crichton as a centre of excellence
- Growth of the academic sector and its contribution to the local economy, as a major employer and in terms of local spending power



# Strategic Priorities



# 1

## Sustaining and Growing Equitable and Accessible Learning Opportunities



**The Learner Journey:** We are committed to working jointly and proactively to improve and sustain links with schools to support transitions into higher and further education. We have a commitment to deliver a breadth of learning opportunities and range of learner journeys in subject areas that are of importance regionally, nationally, and internationally.

As a partnership we will also develop and support opportunities to engage in work-based learning and apprenticeships, whether at the beginning of a career, or later through retraining and upskilling, allowing individuals to maximise their contribution and reward from the work they do.

**Increasing Higher Education Provision in the Region:** Commitment to increase regional delivery of degree level study in sectors of key economic importance and, where funded places are the appropriate route, attracting local, national and international students.

**Creating a Culture of Enterprise:** We are committed to exploring opportunities for collaboration with both businesses and academic partners across the South of Scotland and beyond. Boosting an entrepreneurial mindset will be vital; start-ups and scale-ups can create skilled jobs, pay higher wages, drive increased productivity and spread innovation across the wider economy.



“Over the last 20 years we have led a number of initiatives on the Crichton, but always in partnership and with a sharp focus on how we can contribute to meet the challenges of the region and where we can demonstrate impact... .. It’s an exciting time for the Crichton Campus, and we’re keen to play our part in the next chapter.”

*Susan Stewart, Director at The Open University in Scotland*



“The University works in close partnership with other providers on the Crichton Campus, notably Dumfries and Galloway College, to deliver programmes that aim to support the region’s skills and knowledge needs. We look forward to working with partners to develop new programmes that meet emerging regional needs for graduate skills, research and knowledge transfer.”

*Marcus Ross, Vice Principal, University of West of Scotland*



## 2

## Student Experience



As well as a high-quality educational experience, it is critical to the future sustainability and success of the Crichton Campus that all learners benefit from an **enhanced and vibrant student experience**. To achieve this, partners are making significant investments in the fabric of the Campus to ensure students have access to high quality, contemporary learning environments that are technology rich and that meet the emerging needs of the region. There is a shared desire to continually develop campus facilities, regularly taking account of student feedback and reflecting the expectations of learning in the 21st century.

The provision and location of **student accommodation**, offers opportunities to consider wider economic benefits, through linkages with the ambitions to regenerate Dumfries Town Centre and provide a critical mass of residents that are able to access and support a more vibrant evening economy. Working collaboratively, partners intend to align approaches to accommodation strategy, to best serve the needs of all organisations.

Creating a **21st Century Student Study Centre** will incorporate access and inclusion services which anticipate individual need, identify barriers to participation and eliminate or mitigate these to ensure that everyone gets a fair, holistic and equal opportunity to an outstanding student experience. There is an opportunity to develop the outstanding facilities provided by the Campus academic partners through the proposed Crichton Centre for Memory and Wellbeing, which is being developed by the Crichton Trust at the location of the Merrick building, incorporating archive and exhibition space, as well as a student study area, for use by all academic institutions.





### 3

## Increasing Research Capacity and Interdisciplinary Knowledge Exchange Collaboration



We will build on existing strengths and niche areas of expertise, for example SRUC digital dairy chain innovation research, through co-operation, building relationships with leading innovation institutions and organisations to further establish The Crichton as a **centre of excellence for research, entrepreneurship and collaboration**.

**Working with businesses to increase economic activity** within the South of Scotland is important to all academic partners and we welcomed the launch of the South of Scotland Enterprise and Borderlands Inclusive Growth Deal, which offer opportunities for academic partners to be involved and, in some cases, lead on new initiatives.

By developing a sense of community for postgraduate staff and students connected to the Crichton Campus through the different institutions, there are numerous opportunities for the academic partners to further **grow the knowledge exchange on the campus and across the region**. Although this has been an active area for the academic partners in recent years, there is potential to further enhance the offer – connecting and reaching more businesses in the region.



“...the Crichton Campus continues to play a key role in our unique offering of tertiary education, consultancy and world-class research. Being based at Crichton epitomises the power of place and the importance of collaboration”

*Professor Wayne Powell, Principal and Chief Executive of Scotland's Rural College (SRUC)*





“The ambition of the CCLG partnership to have a transformational impact on the prospects of Dumfries and Galloway, its economy, its people and its communities is vital to the South of Scotland. As a strategic partner, SOSE aims to work with the group in the region’s skills planning, supporting government Net Zero and NSET ambitions, as well as its national lifelong education and skills planning priorities.”

*Russel Griggs, Chair, South of Scotland Enterprise*

## 4

### The Crichton as a World Site for Business Innovation and Collaboration



There is a bold vision developing to establish The Crichton as a global destination with a high reputation as the place that inspires and **makes connections, drives collaboration and innovation**, and where the past meets **the future entrepreneur** to generate answers to the big challenges of our time.

Adopting a **“whole ecosystem” approach** to developing an intergenerational campus that provides an age-friendly, low carbon and tech-enabled place for living, working and studying, as well as participating in cultural, social and physical activity. The proposed Crichton 21st Century Village at the Ladyfield site is an example where the South of Scotland could lead on research and innovation that would be relevant across the health sector in Scotland and beyond. A first of its kind in the UK, the Ladyfield village would offer multi-generational living on a “care campus”, with the opportunity to embed research and innovation into the everyday life of the residents.

The potential is to establish The Crichton as a **world site for business innovation** and a **home to rural design thinking, collaboration and learning**.



## Meet the Partners

---

On the following pages, learn more about the partners who make up the Crichton Campus Leadership Group and how they contribute to both the campus and to the region's skills, education and training opportunities.





## CRICHTON FOUNDATION

Crichton Foundation provides student funding in Dumfries and was set up in 2000 to support the creation and development of a diverse Campus and innovative centre for learning and enterprise in Dumfries and Galloway. The Foundation's success in fundraising has protected the original endowment of Elizabeth Crichton, enabled awards and grants to be offered to individual students, assisted Campus partners in developing their programmes and collaborative working, and preserved the Crichton estate as a public asset appreciated by the whole community.

The Foundation encourages local people, businesses and organisations to take an active interest in the Crichton Campus.

"The Crichton Foundation's relationship with the CCLG is a fundamental part of our raison d'être. As a charitable trust we have over many years raised substantial investment funding for the partners of the Campus... We work closely with the academic institutions, all of whom are represented on our Board."

*Andrew Walls, Convenor, Crichton Foundation*



## THE CRICHTON TRUST

The Crichton Trust is a company limited by guarantee with charitable status, established in 1996 to promote, regenerate and care for The Crichton and other buildings of historic interest throughout Dumfries and Galloway.

The Trust has the overall strategic responsibility of ensuring that the site is managed and developed to an appropriate standard. Our mission is to preserve, enhance and interpret the historic character of The Crichton and develop it with a clear identity as a place of educational, commercial, recreational, cultural and artistic excellence taking account of accessibility and stakeholder and community needs for the benefit of Dumfries and Galloway.

Here at The Crichton, we want to empower and enable a new cross-generational, business, academic and individual knowledge exchange community that shapes the Future Economy.

We will do this primarily via the enterprising custodianship of The Crichton, creating a world-renowned home and destination for innovation; a place for people to cohabit and share ideas – all inspired by The Crichton's extraordinary history, places and spaces. Rooted in our rural setting and gigabit connected to the world.



## DUMFRIES & GALLOWAY COLLEGE

Dumfries and Galloway College is a further and higher education institution with a leading voice in green skills development to help tackle climate change.

With campuses in Dumfries and Stranraer, we are one of the main employers and providers of learning and training across the South of Scotland, with programmes ranging from senior-phase school partnerships to higher education, including our brand-new pathways to university in conjunction with University of the West of Scotland.

We also offer a wide range of training opportunities for organisations in the region to ensure the workforce of today is prepared for tomorrow, as well as online and open learning courses to provide the flexibility that is required for all our learners in today's society.

We strive to equip all members of our college community with the skills, knowledge and practical experience to get one step ahead, whether that's moving onto further education or going into employment.



## DUMFRIES & GALLOWAY COUNCIL

As a partner in CCLG, Dumfries and Galloway Council is the third largest Council area in Scotland, covering a rural area with a coastline that extends from Loch Ryan and the North Channel around to the Solway Firth and Cumbrian coast in England.

Our Council will help Dumfries and Galloway to thrive and build a strong local economy that enables the region to grow, and we will create opportunities for businesses to invest, people to visit and our citizens and communities to reach their ambitions.

“Playing the role of collaborator, such as with the Crichton Campus Leadership Group, can produce better outcomes that are not always ‘delivered’ by individual local authorities but are the result of many overlapping factors – people, organisations, processes, cultures – interacting together in a system in creative, effective, and efficient ways.”

*Gillian Brydson, Director of Education, D&G Council*



## NHS DUMFRIES & GALLOWAY

NHS Dumfries & Galloway aim to deliver excellent care that is person-centred, safe, effective, efficient and reliable, as well as working with the communities and partner organisations to reduce health inequalities across the region. We are clear about our commitment to partnership working, maximising the potential of the NHS as a contributor to the local economy, provide the best possible working conditions for our employees and, fundamentally, articulate clearly our expectations regarding the quality of care that the people of Dumfries and Galloway can expect from our services.

Through working with the Crichton Campus Leadership Group, we link closely with academic providers to serve the needs of our workforce, and we bring an employer voice to the group, driving skills analysis requirements. This collaborative partnership work serves not only our organisation, but also the wider strategic approach to maximising the benefits of the Crichton Campus and the region.



## OPEN UNIVERSITY

The Open University is a world-renowned institution dedicated to providing flexible, high-quality education and training opportunities for learners of all ages and backgrounds. The University is a sector leader in supported distance learning and widening access. We work in partnership with other universities, colleges, schools, the NHS, the third sector and employers across Scotland. By collaborating with others, we connect with a far greater community of learners than we could reach on our own.

Since it began in 1969, the OU has taught more than two million students worldwide and has over 205,000 current students, including more than 20,000 in Scotland. In 2021/22 there were 715 registered students from Dumfries and Galloway.





## SRUC

Scotland's Rural College (SRUC) was established in 2012 through the merger of the Scottish Agricultural College (SAC) with Barony, Elmwood and Oatridge Colleges. Through these institutions, we can trace our lineage back over 100 years.

SRUC is a tertiary academic institution, connected countrywide through multiple campuses and offices. We focus on the creation of a strong, productive natural economy for the country and beyond through learning and teaching, world-class research and commercial and consulting activities. By working in partnership, both locally and globally, SRUC aims to solve the 'wicked challenges' facing the planet, including climate change, biodiversity and access to nutritious food and clean water.



Scottish Funding Council  
Comhairle Maoineachaidh na h-Alba



## SCOTTISH FUNDING COUNCIL

The Scottish Funding Council (SFC) are Scotland's tertiary education and research authority, and our purpose is to sustain a world-leading system of tertiary education, research and innovation that enables students to flourish, changes lives for the better, and supports social, economic and environmental wellbeing and prosperity.

Through extensive partnership working, with other funders, skills and enterprise agencies, qualification and data authorities, we secure mutually shared goals and outcomes, joined up impact and greater public value.

"Partnership working is fundamental to SFC's ability to deliver impact and successful outcomes. We are therefore delighted to support the CCLG, recognising the strength of collaboration it has brought to the region and the benefits it has delivered for learners through a tertiary approach to learning and strong partnership working across all stakeholders."

*Dr Jacqui Brasted, Deputy Director, Assurance and Outcomes, SFC*

Skills  
Development  
Scotland



## SKILLS DEVELOPMENT SCOTLAND

Skills Development Scotland (SDS) is the national skills agency. Our ambition is that skills contribute to a thriving, productive and inclusive Scotland. SDS collaborates across the skills ecosystem to make this happen. We achieve this through intelligence-led delivery of Scotland's Career Service, Apprenticeships, and using evidence and insight to inform other learning and skills interventions in support of Scottish Government ambitions.

The challenges Scotland faces over the coming years differ across its regions, and as such, the importance of place-based solutions is paramount. As a national agency, we commit to collaborating with partners at the right level. Working closely with South of Scotland Enterprise (SOSE), the South of Scotland Regional Economic Partnership and the Crichton Campus Leadership Group, we will ensure skills are at the heart of economic development plans and actions around population and talent attraction.

Our corporate goals chime with those of the Crichton Campus Leadership Group; industry-focused skills, inclusive talent pool, invested employers, intelligence-led system, and impactful organisation.



## SOUTH OF SCOTLAND ENTERPRISE

South of Scotland Enterprise (SOSE) is the one-stop shop for businesses and enterprising communities throughout Dumfries and Galloway and the Scottish Borders. We're here to help people and enterprises in the South to thrive, grow, and fulfil their best potential. Every enterprise is different, and SOSE support is tailored to any stage and situation. Services can include training, advice, specialist expertise, and funding.

As part of supporting our region, it is vital that we work with stakeholders, such as the CCLG, to enhance the learning and skills opportunities for both people, and enterprises. By having an agile and regionally responsive skills and training offering, we will be able to respond to the region's social and economic needs.



## UNIVERSITY OF GLASGOW

The University of Glasgow has had a sustained presence in Dumfries since 1999. For nearly 25 years, the University has delivered outstanding learning and teaching, offered unique placement and field work opportunities, and conducted world-leading research all from a base within the Crichton University Campus.

Founded in 1451, the University of Glasgow is part of the prestigious Russell Group – a collective of 24 world-class, research-intensive universities across the UK. As a civic institution, the University has long standing engagement with partners at a local, national, and global level. This is true of our Dumfries Campus as we continue to work in collaboration with partners on the Crichton site, and beyond.

The student and staff population has diversified significantly in recent years with over 40 nationalities now represented. The subjects delivered on Campus are designed to make best use of the surrounding 'living laboratory' of the Crichton estate and the wider Dumfries & Galloway region. With a developing portfolio of programmes across environmental science & sustainability, tourism, education and health, the University is continuing to grow its presence in Dumfries.



## UNIVERSITY OF WEST OF SCOTLAND

University of the West of Scotland (UWS) stands as one of Scotland's largest modern universities, with our influence extending across the south and west of Scotland, as well as in London. The University is a driving force in global knowledge creation, innovation, and a leading provider of undergraduate, postgraduate, and research degree education.

Situated within the Dumfries and Galloway College building on the Crichton estate, our cutting-edge Dumfries campus offers a diverse range of flexible UWS study opportunities. Our Dumfries campus thrives on collaboration, channelling research, education, and partnerships with local businesses to generate significant economic benefits. This approach nurtures local talent, generates job opportunities, and adds value to businesses across the region.

Equipped with state-of-the-art facilities, our campus provides a forward-looking higher education experience for the next generation of professionals in nursing, social work, childhood practice, and computing. A standout feature is our simulated healthcare centre, designed to replicate real-life healthcare settings in Dumfries and Galloway. It offers a vital resource, equipping health students with hands-on skills and expertise to excel in their future careers while addressing the region's workforce needs and contributing significantly to healthcare provision.



# Other on-site highlights

---

**Advancing Innovative Manufacturing in the South of Scotland (AIMS)** project is a group of innovation facilities established to support manufacturing for small/medium sized enterprises (SMEs) in the region. Hosted at Dumfries & Galloway College, and incorporating state-of-the-art equipment and technologies, the AIMS project offers SMEs access to advanced manufacturing, business support and industry-led expertise.

The **Scotland 5G Centre Innovation Hub** at the Crichton Campus offers access to cutting edge 5G mobile private networks. One of six nationwide hubs, the centre at The Crichton provides an opportunity for public and private sectors, start-ups, entrepreneurs and academic researchers to test new 5G enabled products, services and solutions.

Based at The Crichton and hosted by the University of Glasgow, the **National Centre for Resilience (NCR)** is a national cross-sector partnership – spanning Scottish universities, government and practice. It facilitates research collaborations, projects and knowledge exchange to ensure Scotland's communities are better prepared for and able to respond and recover from natural hazard events.

**Crichton Central** provides dynamic co-working spaces, meeting rooms, a recording studio and a café, allowing for collaborative opportunities for freelancers and businesses in the region. The connectors workspace coupled with the latest in hybrid tech innovation ensure the very best opportunity for collaboration.

The proposed new **Crichton Centre for Memory and Wellbeing**, replacing the Merrick building, will contain exhibition and archive facilities to house the Crichton Archive, and the Crichton Heritage Centre: enhancing people's understanding of the Crichton's 180 year heritage and innovation in the provision of mental health care. The building will also bring together a new visual arts and exhibition space, an intergenerational academic study centre, and a regional art and land archives and research centre.





## Find Out More

---

Are you interested in supporting and collaborating with the Crichton Campus Leadership Group?

We have a Development Director, whose role is jointly funded by the Scottish Funding Council and South of Scotland Enterprise. The Development Director is our key contact, who works closely with all members of the CCLG and can direct you to any of our partners.

To find out more, please contact

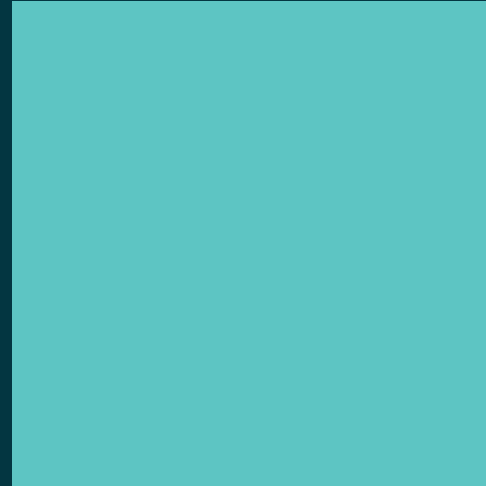
**Frances Woodfield**

[frances.woodfield@sose.scot](mailto:frances.woodfield@sose.scot)

Phone: 01750 535855

Mobile: 07721 580927





CRICHTON  
CAMPUS  
LEADERSHIP  
GROUP